



DRIVE

LIGHT

a newsletter of the
Under the Computer Hood User Group, Inc
HAPPY NEWYEAR!



Meeting reminder Jan 4th, 2012

Topics: Intro to Thunderbird Email,
Open Forum on Windows 7, Worst
Passwords

Meeting Place: Wesley Palms
2404 Loring St.
San Diego, CA 92109 7:00 PM

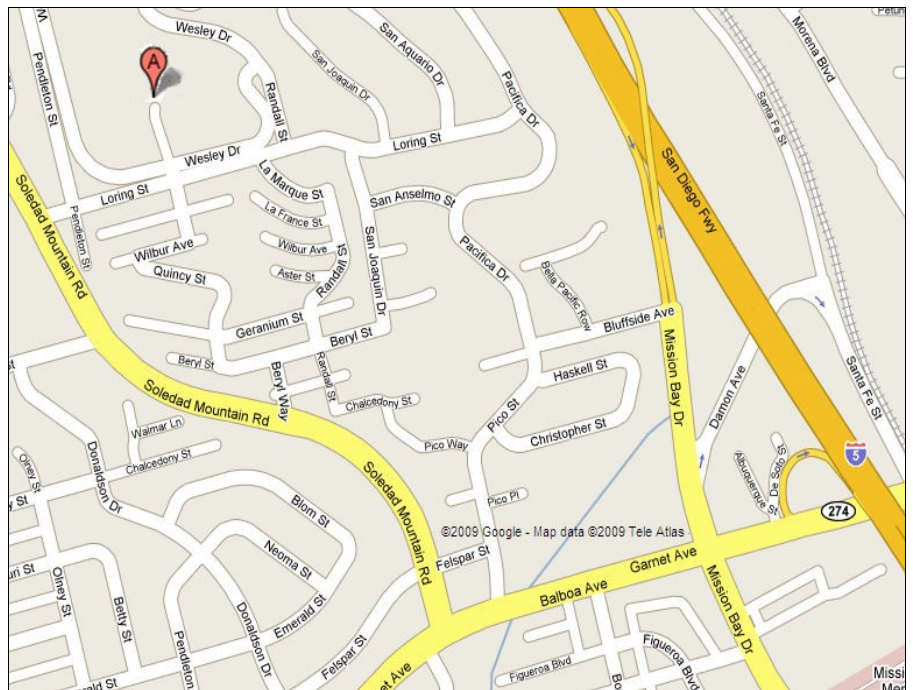
(click map for google maps)

For More information about us go to our
website: www.uchug.org

Features in this issue:

Prez' Corner	2
Secretary's Reports	5, 8
PartyTime Pix	6
Bits and Pieces	9
7 More Bits	10
Choices	11
Shutdown	13
Banking Trojan	14
Opt Out	15
Broadsides	16
Renewal Reminders	18

The above links are "Hot". Click on any title and jump to that page. Click on the Drive Light logo at the bottom of each page to return to this index. Use the underlined links in each article to quickly go to the web sites referenced.





President's Corner by Greg Skalka



The Saga of Yet Another Computer Upgrade - Part CXL

It is time for my annual recap and predictions. With the New Year, it is a good time to look back on our last 12 months, as well as look forward to what we can expect for our group and computers in general in the future. I'll review my probably vague predictions from last year, and see if I'm more willing to go out on a limb for what we may be in for this year.

We have had another busy year at our UCHUG general meetings, with plenty of diverse, interesting presentations. Once again, all our presentations were home grown, with no outside speakers. Hopefully we can get an outside presenter (live or webinar) to change it up this year. Fortunately, we have great officers and members, and have not had a shortage of volunteers when it came time to put on presentations. Our now-standard format of at least two different meeting topics each month has helped keep interest up and I think contributed to maintaining a decent attendance throughout the year. We were been able to hold all our normal meetings in the spacious accommodations of Woodbury Hall, with no diversions to the Activities Room as in the past.

Our two more celebratory meetings, the summer picnic and the holiday party, were once again well received. We added a few new twists to the December program this year, including a great magic show put on by Greg Wauson, and a pile of computer prizes procured by Bob and Ray, instead of the usual raffle gift certificates. These changes seemed to go over well and so will probably be repeated.

Our treasury balance and our membership ranks have remained steady throughout the year, which is good for a group like ours. Meeting attendance is down a little from past years, but we still have a loyal core group of members that attends regularly. We are down one officer in the Member-at-Large category, but I'm hopeful we can soon find an enthusiastic member willing to serve for the rest of the term. As always, our board meetings are a pleasure to run, as our officers are so congenial and willing to contribute.

Many of our members were once again able to gain additional computer knowledge and networking opportunities at the annual Southwest Computer Conference here in San Diego this past year. We continue to benefit from our affiliation with conference organizer, Judy Tylour, and her newsletter article resources, which help our editor fill these pages. The 2012 conference will be held near the end of June and will be rebranded the Southwest Technology & Computer Conference. I don't have to go to my crystal ball to predict it will be another success.

My column of one year ago had only a few vague predictions for the computer industry. I said there would be more tablets in the market this year, and Amazon's Kindle Fire and Barnes & Noble's new Nook are only the

most popular of the many new players. It was not too hard to predict that we would all likely have more different computing devices, but problems of access limits and system slowdowns would still remain. I did not predict the floods in Thailand that would result in damaged factories and shortages of hard drives, and the increased prices for drives and computers we are seeing now. I was fortunate to have purchased a number of large drives at the low point in pricing this fall, as well as a couple of new computers and external drives. I predict this present price increase will diminish by mid-year, with the next Black Friday sales having bigger and cheaper hard drives once again. I also predict the Kindle Fire in particular will cut into Apple's market share for tablets, but that tablets will still remain a secondary computing device as compared to laptops and desktops. I think local company ViaSat's new satellite will have a big impact on the market for reasonably priced broadband access for rural and under-served markets this year. I'll leave it to you readers to pass judgment on my prognostication abilities from a year ago, and to keep me honest about my picks for next year.

As far as our group goes, I believe we will maintain our strength and continue to meet a need for computer education and resources for problem resolution that will not go away in the near future. Happy New Year!

Chapter 240 - A Slow Start and New Relationship

As I mentioned last month, I managed to buy my wife a new laptop and myself a new desktop computer before the prices went up due to hard drive shortages. Unfortunately, due to a life that is altogether too busy, my new computer has yet to emerge from its box. I have started working on getting the laptop put into service, but that task has been complicated by my switch in allegiances for antivirus and firewall software.

The only firewall software I had ever used until recently was ZoneAlarm. After using their free firewall software for many years, I started using their security suite, which also included virus and spyware protection. I never had to pay for the suite software for any of my computers, though, as I was able to take advantage of enough rebate offers to always have it for free. I became very familiar with the firewall software, but never thought that much of their antivirus solution. I was using Norton's Antivirus prior to that, but after Norton/Symantec managed to make their software incompatible with ZoneAlarm's firewall, I abandoned them pretty much completely.

The last year or so has been a bit rocky for me in my relationship with the ZoneAlarm security suite. Each new ZoneAlarm program update seemed to bring a little more instability and a little less speed to the antivirus operation. Getting antivirus signature updates seemed to consume all the computer's resources, slowing other functions to a crawl. The updates also seemed to come at the most inopportune times. The program's desire to update right away after boot-up meant a slowdown just when you want to use the computer the most. I tried but was never fully successful in shutting down the auto update feature to spare me of this performance lag on start-up. A few other problems that required a wipe of the program and full reinstallation, and a difficulty in getting support a few times caused my antivirus eye to start wandering.

I'd heard a lot of good things about ESET's NOD32 antivirus program from our webmaster. It had a reputation for being small in size but fast in operation and easy on your system. A few good sales on the ESET Smart Security suite, combined with a lack of rebate offers on ZoneAlarm, made me plan to try this new security suite on the new computers. As if sensing it was being jilted, the ZoneAlarm suite stopped updating virus signatures altogether soon after. I vowed to get ESET's suite running on the new laptop, and then use my 3-user software packs to switch all my existing computers over to it.

The new rose was not without its thorns, however. I tried installing ESET Smart Security 4 several times before

giving up on putting it somewhere other than on the C: partition. It seemed to install fine other than that, and didn't appear to take up much space, so I let it have its way (perhaps not a good way to start out in a relationship). It also immediately blocked the laptop's access to my network hard drive, and this took me a while to correct in a less than desirable way. I'm still learning how to work with this new firewall and get it set up the way I want, but the antivirus part seems to work great right out of the box. It did also allow me to upgrade to Smart Security 5 for free, something I wondered about when the new version came out right after my getting the old one at a big discount. I'm still learning in this new relationship, but since I lose subscription support from my old antivirus vendor in a month, I've need to become proficient soon and change over all my computers. ESET and I are still dating, but the divorce is almost final for ZoneAlarm ISS. I want this new relationship to work, but I could see myself cheating with the free ZoneAlarm firewall if I can't relate well enough to the ESET firewall. I am impressed with the level of support ESET provides, as I have been able to get answers from them through email on a couple of issues already.

I'm also getting ready to abandon my Webroot Spy Sweeper when its subscription expires later in the month. It worked well once, but now seems to take days to run a sweep on my older computers. Webroot is also converting their program from anti-spyware software to a suite with antivirus, and I don't need another antivirus. They tried this once before a few years back and then split their product line. I'm not waiting around this time to find out if they change back again; there are too many good free anti-spyware programs available out there.

Greg



Secretary's Reports



General Meeting, December 7, 2011

The meeting was held in the Woodbury Hall of the Wesley Palms Retirement Community at 2404 Loring St San Diego, CA

92109(<http://www.wesleypalms.org/>). The meeting was called to order by

President Greg Skalka at 7:10 p.m.. The President welcomed approximately 23 members and guests to our Christmas party.

President: The President discussed the Christmas party and procedures for the Drawings this year. The evening started off with a Magic Show by Greg Wauson. Many thanks for his display of skill and entertainment.

The following members were winners in the Drawing sponsored by the UCHUG.

- Inland notebook cooler Mark Ferbrache
- Inland notebook cooler Greg Skalka
- Photo KeyChain Al Brengle
- HP 4GB USB Drive 2.0 USB Ray Ferbrache, and Art Gresham, and Greg Skalka and Al Brengle
- Kinston 8GB Flash Drive Mike Trempe, and Greg Skalka
- Netgear Wireless Router Fred Wassermann
- SIIG HDD Enclosure USB Abbott Brownell
- Fry's \$10.00 Gift Card Mike Trempe
- Coby Digital Key chain Ernie O'Campo, and Greg Skalka
- MSF Wireless mouse Purp Jackie Woods Al Brengle
- CushDest Electronics Al Brengle
- DXG Cameras Ernie O'Campo
- IPOD Speakers Bill Palmer
- Midway Museum Tickets Greg Wauson
- **Our Grand Prize of a 2tb External USB 2/3/ Hard Drive was won by Sandy Shapiro.**

The Pot Luck was enjoyed by all plus a couple of guests from Westley Palms.

The meeting was adjourned at 9:06 p.m.

Grand Prize Winner Sandy Shapiro



UCHUG Annual Holiday Auction, Raffle, Banquette and a Magic Show!



Magician Greg Mystifies Group



Bodacious Banquette



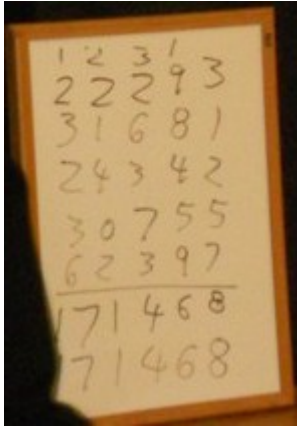
Cups-o-Chance



Decisions, Decisions.



Pondering Prizes



Greg had our number! ?



Our Prez, Moderator, and Auctioneer.





Board Meeting, December 21, 2011

The meeting was called to order at the home of Sandy Shapiro at 7:11 p.m. by President Greg Skalka. In attendance were Greg Skalka, Al Brengle, Abbott Brownell, Art Gresham, Mike Trempe, Bill Palmer, Sandy Shapiro, and Ray Ferbrache.

REPORTS:

President - The President reported he intends to attend the next SCRUGGS Meeting in Los Angeles on the 28th of January, 2012.

Vice President - The Vice President had Nothing to Report.

Secretary - The Secretary had Nothing to Report.

Treasurer - The Group is solvent and operating below budget. We came close to breaking even on the Christmas Party.

Membership - The membership chairman reported 5 members renewed at the Christmas Party.

Editor - Request inputs over the Christmas weekend.

WebMasters - New updates have been posted during the past few weeks.

PROGRAMS:

January - Introduction to **Thunderbird**. This will be an overview of this email client's features, installing and setting up an email account, the window layout, the Lightning Calendar. Thunderbird is a part of the Mozilla Project which was created in 1998 with the release of the Netscape browser suite source code. A browser named Phoenix in 2002 rose from the Mozilla Foundation which was formally formed in 2003. This browser later renamed to Firefox. The Email program was also being created at this time and Thunderbird 1.0 was released December 7, 2004. <http://www.mozilla.org/about/>. The presenter, Art Gresham, has been using Thunderbird since mid 2005.



The second program for the evening will be an Open Forum on Windows 7. Bring your questions and ideas for Windows 7. Help the Board share your knowledge and skill with the Windows 7 Operating System.

If time permits, We will talk about the Worst Passwords and how to better make and use passwords on the Web.

February - TBD

OLD BUSINESS:

A discussion was held on the December 2011 Christmas Party. The entertaining Magic Show by Greg Wauson was well received. Out change to having more Computer oriented items in the Drawing was a success from the comments heard at the party. The use of Cups for tickets to let members have a higher chance of winning the drawing of their choice worked well. The party atmosphere was good. The Board request any suggestions or ideas for next years Christmas Party.

The President will look into trying to get our meeting announcement displayed on the Viewing Panel at the United Oil Service Station in Penasquitos area.

NEW BUSINESS: None

The meeting adjourned at 8:56 p.m..



BITS and pieces

A look at items of interest found on the web



How to disable the Windows Logo key

Many modern keyboards come with a Windows Logo key which, in combination with other keys, can provide shortcuts for many functions. However, some folks have problems with hitting it when they don't intend to do so, causing the computer to perform unintended tasks. You can disable the key through Windows, either using the "Fix It" tool in KB article 216893 or by manually editing the registry. This work for all popular versions of Windows from Windows NT to Windows 7 and Server 2008 R2.

XP Tip of the Week: Get rid of the prompt when you delete files

Microsoft tries to protect you from inadvertently deleting files that you really want to keep, so XP gives you a "second chance" by popping up a dialog box that asks "Are you sure you want to delete" whenever you delete a file. But that can be annoying, and isn't really necessary since you can recover deleted files from the Recycle Bin. Here's how to turn off that dialog box:

1. Right click the Recycle Bin on the desktop.
2. Click Properties.
3. Uncheck the box that says Display delete confirmation dialog.

Speed up the Start Menu

The default speed of the Start Menu is pretty slow, but you can fix that by editing a Registry Key. Fire up the Registry Editor and navigate to the following key:

HKEY_CURRENT_USER \ Control Panel \ Desktop \ MenuShowDelay

By default, the value is 400. Change this to a smaller value, such as 0, to speed it up.

If this doesn't work for some reason, then you might try the following: Navigate to Display Properties then Appearance then Effects and turn off the option titled Show menu shadow. You will get much better overall performance. [from the tipsandtrick-xp.blogspot](http://fromthetipsandtrick-xp.blogspot)

How do I restrict a User's Logon hours?

You can only restrict when a user can log on to the system. On a stand alone computer, there is no way, currently, to force a user to log off when their hours expire.

- 1) Open Help and Support and type "logon hours" (without the quotes) in the search box.
- 2) Go to Full text matches and click on "Net user". See the examples for setting a user's logon hours. Some examples would be:

```
net user johnsw /time:M-F,08:00-17:00
net user johnsw /time:M-F,8am-5pm
net user marysl /time:M,4am-5pm;T,1pm-3pm;W-F,8:00-17:00
net user johnsw /time:all (this one means this user can always log on)
```

- 3) Open a Command Prompt window.
- 4) Enter the appropriate "net user" command for the user(s) you wish to restrict access for.

[dougknox tips](http://dougknox.tips)



More Bits

Use Devices and Printers feature to install, view and manage devices and printers

If you've upgraded to Windows 7 from XP, you might have noticed a new interface called Devices and Printers that's replaced the old Printers and Scanners folder. It allows you to see all of the peripheral devices connected to your computer, such as pointing devices, headphones, flash card readers, keyboards, monitors, USB storage devices and more. Note that this is different from the Device Manager, which still exists in its usual form.

To find out what does and doesn't appear in Devices and Printers and what you can do with your devices from here,

<http://windows.microsoft.com/en-US/windows7/Install-view-and-manage-your-devices-and-printers>

IE running slowly on Windows 7

QUESTION:

I have a laptop computer with 4 GB of RAM that runs Windows 7 Home Premium. It's generally pretty fast with most programs but Internet Explorer takes forever to load and is very slow to go to pages. Any ideas what could be slowing it down and how I can fix it?

ANSWER:

The problem is often add-ons. These are programs that "plug into" IE and add more functionality, such as the Google Toolbar, Microsoft Silverlight, etc. Here's how to find out if that's the problem: In IE, click Tools | Manage Add-ons. You'll see a list of add-ons that are currently loaded (you can click the drop-down arrow under "Show" to see all add-ons that are installed). Disable any that you don't need. To disable an add-on, right click it and select Disable. You can start by disabling all the add-ons, and see if IE runs faster. Then add back the ones you want, one at a time. Check IE's performance each time you add one; this can help you pinpoint which add-on(s) might be causing the problem.

You might also see slow page rendering in IE 9 when you go to pages with complex graphics, because the browser is using Software Rendering mode instead of GPU Rendering mode. You might need to update the drivers for your video card to fix this. You can find out more about this problem in KB article 2398082.

"Bootmgr is missing" message when starting Windows

Here's a scary scenario: You go to boot up your Windows Vista or Windows 7 computer and instead of bringing up your desktop, you get an error message that says "Bootmgr is missing. Press CTRL+ALT+DEL to restart." Of course, restarting just brings you back to the same message. Ouch! This message indicates that the boot sector for your computer is damaged or missing, and that is most definitely not a good thing. KB article 2622803 offers some methods for repairing the problem.

TOO MANY CHOICES

by Wil Wakely

Member of UCHUG and Seniors Computer Group

Choosing a computer used to be relatively easy: Do you want a desktop with a tower or a flat unit that fits under your monitor? This is no longer true. Now we have a plethora of choices: Desktop, Laptop, Notebook, Tablet, Smart Phone, and smart e-Book Reader. Perhaps I have missed a late comer; if so, forgive me. Let's review the features, pros and cons of each.

Desktop For a fixed location, non-portable computer a Desktop is the best choice. It is the least expensive computer and can be easily customized to whatever your computing needs might be. It is a necessity for gamers and heavy-duty computing such as photo and video processing, CAD (computer-aided design), and data processing. There are wide choices of software and hardware which results in lower costs and greater availability of these items. Larger displays, multiple ones if desired, are available along with specialty multi-function keyboards and a variety of mice, all of which can be easily attached. More powerful computer chips, memory chips, video processors, large, multiple hard drives and powerful wireless adaptors are choices only available with Desktops. The choice between proprietary brands such as Dell or HP vs. a 'plain vanilla' custom machine depends upon your budget and how much technical support you may need.

Laptop Portable laptop computers come in a variety of sizes, prices and features. Many of the more expensive ones rival some Desktop machines in capability. The display screens are smaller than Desktops and the keyboards with the integrated touchpad mouse are not as user friendly as those on Desktops. Newer models have built-in Wi-Fi for connection to the Internet, whereas older models required a USB Wi-Fi adapter. Most Laptops have a built-in video camera for video messaging with friends via Skype. For equivalent features, Laptops are always more expensive than Desktops as are any repairs or upgrades. However, if portability of a powerful computer is a requirement, a Laptop is a good choice. An auxiliary USB external hard drive or large thumb drive (flash drive) is useful for backup and storage for Laptops.

Notebook The Notebook is just a smaller, lighter version of a Laptop with a smaller screen and keyboard. It is not recommended for heavy duty use, but is fine for travel and is less expensive than Laptops, Tablets or Smart Phones. Most of the Laptop features are also found in Notebooks. Some Notebooks come with electronic memory instead of hard drives. This memory is faster and lighter, but holds much less data than hard drives. The Chrome by Google is a Notebook that utilizes the Cloud for much of its power and capability.

Tablet A Tablet has no external keyboard, but the screen is touch sensitive so a virtual keyboard on the screen is provided instead. However, the touch-screen eliminates much of the standard keyboard activity. The availability of software for Tablets is growing rapidly, but there are nowhere near the number of titles available for the computers described above. For casual use, Tablets are fine for email, Web browsing, limited word processing and spreadsheet work. Most Tablets are less expensive than Laptops, but often cost more than Notebooks. Tablets also have e-Book reading capability. They have no hard drive but Cloud storage via the Internet somewhat replaces this function. The iPad by Apple seems to be the leader in Tablets, but many competitors are coming on-line with similar features at lower prices.

Smart Phone There are two major varieties of Smart Phones: iPhone and Android. The iPhone is a proprietary operating system by Apple and is more expensive than other Smart Phones, but is claimed to be more user friendly. The Android phone is an 'open source' operating system developed by Google and as such has many more Apps, (software applications). The major drawback to these phones is the small display screen. They have

touch screens in lieu of a keyboard. However, they are cell phones, which none of the above are. They are also connected to the Internet for email and Web browsing and can play music and video. The phones can be quite inexpensive because the carriers (Verizon, ATT, etc.) require signing a two year contract for the reduced cost. Breaking the contract early can be very expensive. There is a basic cost for the phone service and an equivalent monthly charge for Internet service. There also can be an additional service charge for data usage. Look for unlimited data-use contracts, if available.

Smart e-Book Older e-Book readers were just that — monochrome digital book readers, e.g., early models of the Amazon Kindle. Newer Readers such as the Amazon Fire and Barnes&Noble Nook have full color touch screens with Wi-Fi along with their e-Book reader function. The Fire also has free Internet connectivity via Sprint. So the e-Books are now competing with the Tablets, having similar features but with a display size intermediate between Tablets and Smart Phones. Look for e-Book Readers to become even smarter in the near future.

So what's next? I predict expanded speech recognition and generation will soon be incorporated in most computers, as an alternate to touch-screen, mouse and keyboard. A larger selection of Apps will become available as software programmers jump on this lucrative bandwagon. Faster Internet connections are already available in selected locations and will come to your area soon. Look for LTE, 4G, 5G and even faster connections. Better displays that don't wash out in sunlight are being developed and we should see them soon. Lower prices and enhanced features due to competition favor the consumer and should happen very quickly. Decisions, decisions... Stay tuned!

This article was printed in Bits and Bytes e-newsletter published to members of Seniors Computer Group which meets at 9:30 a.m. every Saturday at Wesley Palms. Check the SCG website at <http://home.roadrunner.com/~scg/events.html> for more details about this great group!

Shut down, Sleep, Hibernate - Which one, when and why?

By Phil Sorrentino, President, Sarasota PCUG, Florida
November 2011 issue, Sarasota PC Monitor
www.spcug.org
president (at) spcug.org



Shut-down is pretty straight forward, it removes power from your computer and ensures that the next time the power is turned on, the computer will go through the normal "boot up" process. Sleep and Hibernate are different and are "Powered Down" modes. The reason for using one of these powered down modes will differ depending on the type of computer, desktop or laptop, and the need to quickly get back to the operating mode after a pause in operation. Power usage, though always important, is mostly a consideration when using a laptop. How much operating time, before the batteries must be recharged, can be a big consideration for a laptop user. It can determine how useful the computer may be on a long flight, or how many movies the kids can watch on a cross-country road trip. Even with desktops, the increased cost of electricity can become a key factor for customers who are under pressure to manage their total cost of ownership (purchase price plus operating expenses).

The hardware that makes up today's laptops has gotten quite efficient and the Windows Operating System software's ability to manage that hardware's power usage has constantly been improved. One of the biggest improvements since the early 1990's has been the addition of these power down modes, to help provide longer battery life.

Improvements in battery technology has greatly increased battery capacity as well as battery lifetime. Besides improvements in battery technology, the Operating System control over the hardware can also improve the battery life. A job for the Operating System is to make the system as efficient as possible while still maintaining an acceptable user experience when turning the system on and off. (With the advent of Solid State Devices, in place of disk drives, we will eventually get to a very fast on and off experience. You can actually have it now, but it is very costly. By the way, try a tablet PC and see how fast it turns on and off; no moving parts in a tablet PC.)

The Windows 7 power management goals are simple:

- 1) make turning a computer off/on as reliable, simple, and fast as turning a TV off/on, and
- 2) maximize the battery usage if on battery, and reduce the energy consumption if on A/C power.

The first goal involves changing the model for what "off" and "on" really mean. By now, most everyone knows that turning a TV off doesn't *really* turn it *off*. It is still available to receive the remote control signal, so that it can come back on quickly. To the degree possible, "off" is really "sleep", in Windows. When a PC goes into the sleep mode, the system state is saved in RAM; part of that 2 or 3 Gigabytes typically available in modern PCs. This arrangement creates the best balance between speed of resuming operation, and lowest power usage.

Currently, Windows 7 defines three power-down modes:

Sleep - a power-saving state that allows a computer to quickly resume full-power operation (typically within several seconds) when you want to start working again. Putting your computer into the sleep state is like pausing a DVD player-the computer immediately stops what it's doing and is ready to start again when you want to resume working.

Hibernate - a power-saving state designed primarily for laptops. While sleep puts your work and settings in

memory and draws a small amount of power, Hibernation puts your open documents and programs on your hard disk, and then turns off your computer. Of all the power-saving states in Windows, hibernation uses the least amount of power. On a laptop, use hibernation when you know that you won't use your laptop for an extended period and won't have an opportunity to charge the battery during that time.

Hybrid Sleep - is designed primarily for desktop computers, is a combination of sleep and hibernate-it puts any open documents and programs (the system state) into memory and onto your hard disk (so nothing can be lost if power goes out), and then puts your computer into a low-power state so that you can quickly resume your work. That way, if a power failure occurs, Windows can restore your work from your hard disk. Normally, when the user returns and “wakes” the machine, the system state is just restored from RAM, and the responsiveness to the user is fast. However, if for some reason power is lost (for example, if the PC is unplugged to move it - like you might move your TV), the system can still resume from the system state previously saved to disk with all context and data intact. (When Hybrid Sleep is turned on, putting your computer into sleep automatically puts your computer into Hybrid Sleep. Hybrid Sleep is typically turned on by default on desktop computers.) While Hybrid Sleep can be used on a laptop computer, it isn't as applicable. A desktop is vulnerable to power loss, while a laptop can, of course, run on its internal battery.

So, although there is a lot going on to produce and provide the power down modes, there really isn't much to think about. For desktops, let it go into, or select, sleep (which should be hybrid sleep) and for laptops take advantage of hibernate (your battery will thank you).

Detection Tool for a Banking Trojan

The following is a blog report from Fitsec, a Finnish security firm, <http://bit.ly/uPNhup>, courtesy of the orcopug.org December nibbles & bits newsletter

As many of our readers know, banking trojans have become extremely widespread over the course of last few years. There are hundreds of thousands, if not millions, of computers on the internet that are infected by these malicious programs.

We created an experimental tool that can detect almost all variants from the TOP 5 of banking trojan families: Zeus, SpyEye, Carberp, Gozi and Patcher, if they are active and running on the infected computer. The tool works by scanning the memory of each running process, looking for telltale signs of these malwares. If any signs are detected, the tool will report the malware name and the affected process name.

The advantage of the tool is that it doesn't use a conventional signature database, where a detection can be usually avoided by re-packing the malware with a new obfuscation layer. Instead it looks for pieces of code that belong to the actual malware itself.

We'd love to hear any improvement suggestions and comments, feel free to contact us at info@fitsec.com.

The tool can be downloaded from: <http://www.fitsec.com/tools/DeBank.exe>

Are you being followed?

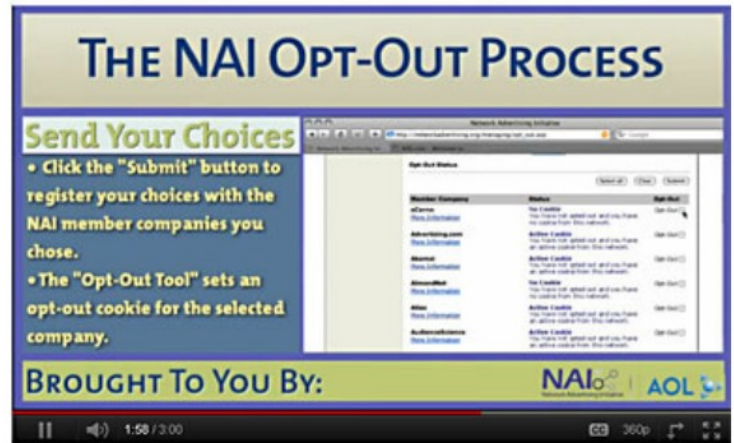


by Linda Gonse
 Editor/Webmaster, ORCOPUG
 editor at orcopug.org

You may not even suspect you are being followed. But, as many as 60 ad networks may be tracking you on the web right now! What's more, they may be selling personally identifiable details about you.

If this disturbs you, you can put a stop to it. You can quickly opt out from advertising networks —each has multiple clients! — with just a few mouse clicks.

The National Advertising Initiative (NAI) is a cooperative of dozens of online ad networks that track you. An NAI statement says it developed an Opt-out Tool “in conjunction with our members for the express purpose of allowing consumers to ‘opt out’ of the behavioral advertising delivered by our member companies.” To this end, NAI offers a YouTube video on their home page showing you how the Opt-out Tool works. (You can also see the enlarged video before you go to their site at <http://bit.ly/ruQt9S>)



Criteo More Information	Opt-Out Cookie You have opted out of this network.	Opt-Out <input type="checkbox"/>
Cross Pixel Media More Information	No Cookie You have not opted out and you have no cookie from this network.	Opt-Out <input type="checkbox"/>
DataLogix More Information	Active Cookie You have not opted out and you have an active cookie from this network.	Opt-Out <input type="checkbox"/>
DataXu More Information	Opt-Out Cookie You have opted out of this network.	Opt-Out <input type="checkbox"/>
Datenics More Information	Active Cookie You have not opted out and you have an active cookie from this network.	Opt-Out <input type="checkbox"/>
Dedicated Networks (AppNexus) More Information	Active Cookie You have not opted out and you have an active cookie from this network.	Opt-Out <input type="checkbox"/>
Dedicated Networks (DoubleClick) More Information	Opt-Out Cookie You have opted out of this network.	Opt-Out <input type="checkbox"/>

A few of the networks that may have placed one or more cookies on your computer.

Basically, the Opt-out Tool, which will not be installed on your computer, examines cookies (small text files) on your computer and identifies those member companies that have placed an advertising cookie on it. When a member company's cookie is identified by the Opt-out Tool, you simply check the box next to the company name. If you are strongly motivated (or highly frustrated), check the “Select All” box! Then, click the “Submit” button, and you're done. The cookies will be removed for the selected companies and your opt-out status will be automatically verified.

Go to the NAI website at <http://bit.ly/sNMIj0> to get the opt-out process started.

There are two caveats. 1. Opting out of a network does not mean you will no longer see online advertising. But, the network from which you opted out will no longer be tracking you personally and displaying ads that are “tailored to your web preferences and usage patterns.” Isn't that the idea? 2. Networks voluntarily allow opting out. It isn't a legal mandate. Also, technical glitches may occur. Cookies from any of these networks may reappear. So, use the Opt-out Tool regularly.

Quantcast Measurement and Advertising does not participate in the National Advertising Initiative, but also offers you the ability to opt-out of their ads based on your interests.

Quantcast claims it doesn't store your IP address or any other personally identifiable information. “But, if you prefer not to receive interest-based content and advertisements enabled by Quantcast and not to have Quantcast measure your pattern of website visits or other online media consumption, you can opt-out by using our opt-out tool” at <http://bit.ly/vNAXOB>.

Opting out is the only way you can avoid being tagged, tracked and tempted by advertisers who know your purchasing history. By opting out you can end hunting season by advertisers who are determined to bag your money.

Broadsides

Compiled by Ron Broadhurst, Member, Space Coast PC Users Group, Inc., FL
November 2011 issue, The Space Coast PC Journal
www.scpcug.com
ringram728 (at) earthlink.net



These ideas are compiled from years of accumulations from various magazines, books, online sites, and my own personal experience. I claim neither originality nor ownership to any of its contents. My only intent is to share the various “tips, “tricks,” & “hints” in hopes of helping & maybe enhancing your computing experiences. They are all intended for anyone who uses a PC. It is for beginners as well as advanced users. Enjoy and use as you will.

In the past my Broadsides articles have dealt with Windows XP and a few others. However, since the emergence of Windows 7, I have decided to add that OS in future articles along with XP. Any suggestions to these Broadside articles is appreciated.

How to customize the CTRL+ALT+DEL screen in Windows 7 Pro and above

When you press the key combination CTRL+ALT+DEL in Windows 7 (and Vista), you get a screen that shows you a number of options, including locking the computer, changing your password, logging off, and starting Task Manager. You can customize this screen to show only those options you want to see, using Group Policy - if you're running Windows 7 Professional, Enterprise or Ultimate edition. Here's how:

1. Click Start
2. In the Search box, type gpedit.msc and press ENTER to open the Group Policy Editor
3. In the left pane, navigate to and click on User Configuration | Administrative Templates
4. In the right pane, double click the folder name “Ctrl+Alt+Del Options”
5. In the right pane, you'll see the items that you can remove (for example, “Remove Lock Computer”). To remove one, double click it and click Enabled to enable the policy and remove the item from the screen menu.
6. When you're finished, click Apply and then OK

To see the change, press CTRL+ALT+DEL

How to display shortcuts and files in the Computer folder

In Windows 7, the Computer folder (formerly known as My Computer) by default contains all the drives and removable storage devices attached to your system. You can also display your favorite shortcuts to applications or documents here so you can get to them quickly. Here's how:

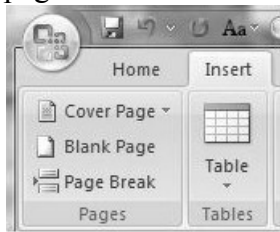
1. Open Windows Explorer
2. Click Organize | Folder and Search Options | View tab.
3. Check the box to show hidden files, folders and drives, and click OK.
4. Now navigate to this folder: Users \ \ AppData \ Roaming \ Microsoft \ Windows \ Network Shortcuts
5. Create the shortcuts in this folder that you want to display in the Computer folder.
6. Open the Computer folder and you should be able to see your shortcuts. To group them together underneath the Network Location, set Explorer to sort by Type.

Shortcut To Create New Folders In Windows 7

The usual way of creating a new folder in previous Windows operating systems was to right-click on a blank space in the window or computer desktop and select the new folder option. There was no keyboard shortcut available that could be quickly pressed to create that new folder. This has apparently changed in Windows 7 as it is now possible to create new folders with the keyboard shortcut [CTRL Shift N]. All you need to do is press this keyboard shortcut whenever you want to create a new folder. The only thing left to do is to type in the name of the folder if you want to change it and hit enter to save the changes.

Insert blank page

Question: How do I insert a blank page between pages 5 and 6 in a Word 2007 document that contains 65 pages?



Answer: With your document open at the place where you wish to insert a blank page:

- Click on the Insert tab
- Click on the Pages group
- Click the Blank Page option.

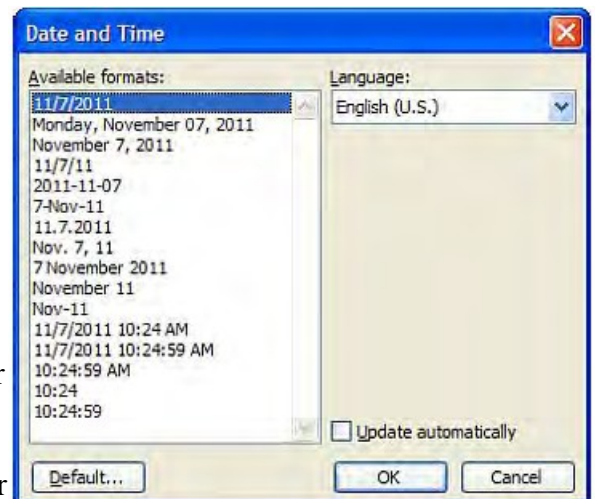
This will insert a blank page.

Inserting the date and time

Undoubtedly, the time will arise when you need to insert the current date or time in your document. This may be in the introduction of a letter or in a header or footer. Word allows you to quickly insert the date or time in several different formats. This information is inserted as a field which can be updated manually or is updated automatically when you print the document.

To insert the date or time into your document, follow these steps:

1. Position the insertion point where you want the date or time inserted.
2. Display the Insert tab of the ribbon.
3. Click Date & Time in the Text group. Word displays the Date and Time dialog box.
4. Select a format for the date or time.
5. Select the check box at the bottom of the dialog box if you want the selected date or time to always reflect whatever is current. If you choose this, it means that Word inserts the date or time as a field so that it always represents the current date or time.
6. Click on OK. The date or time, as specified, is inserted in your document.



2011 - UCHUG - 2012

EXECUTIVE BOARD

President [Greg Skalka](#)
VP [Al Brengle](#)
Secretary [Ray Ferbrache](#)
Treasurer [Mike Trempe](#)
WebMasters . . [Bob and Jackie Woods](#)
Editor [Art Gresham](#)
Membership . . [Bill Palmer](#)
O-a-L. [Abbott Brownell](#)
O-a-L. [Mark Ferbrache](#)
O-a-L. [Sandy Shapiro](#)

A Renewal

R E M I N D E R



The following memberships are due for renewal:

December Joel Owens, Peggy Elliot, Paul Dupre,

January Robert Haas, Lance Dohe

February Abbott Brownell, Wayne Landon, Ed Van Meter, Ernie O'Campo, Sandy Shapiro

THE DRIVE LIGHT is published by the Under The Computer Hood User Group INC. primarily for UCHUG members.

Copyrighted material may be reproduced with the written permission of the copyright holder. Other contents of DRIVE LIGHT may be reproduced for non-commercial purposes only if appropriate credit is given to DRIVE LIGHT and the author and a copy of the publication is supplied to the UCHUG care of the Editor.

Submissions of interest to computer buffs are welcome. All authors and sources must be identified. Copyrighted material can be accepted for reprint only if permission of the copyright holder is included.

The Drive Light preferred method for article transfer is by ASCII text or dot doc or dot odt file to the editor at 1editor101@uchug.org. Deadline for submissions is the weekend following the board meeting (third Wednesday of the month.)

The Drive Light is produced with [OpenOffice.org](#) Writer, and printed to PDF using its native pdf printer.



Articles2go are collected by Judy Tylour, President/Editor/Program Chair at the [Santa Clarita Valley Computer Club](#), and a chief organizer of the annual [Southwest Technology & Computer Conference](#)

Membership in the UCHUG is open to any person interested in computers. The Membership Chairperson is Bill Palmer and he will happily accept your application or renewal at any meeting. Dues are \$15 per year. Please make checks payable to UCHUG.

Checks may be brought to the meeting, or mailed to:
Mike Trempe, UCHUG Treasurer
4027 S. Hempstead Circle
San Diego, CA 92116

If you have questions concerning your membership, renewal date, address info or other questions, please contact Bill Palmer uchug.membership@cox.net

Please be sure to inform us if you change your E Mail address so we can continue to send your monthly **Drive LIGHT.**